

Design

People. Forms. Swisspearl.

SWISS
pearl®



| | |
|---------|------------|
| 04 – 09 | Guhl |
| 10 – 15 | Trash Cube |
| 16 – 19 | Ecal |
| 20 – 25 | Dune |
| 26 – 29 | Mold Lamp |
| 30 – 31 | Porto |
| 32 – 36 | Sponeck |

Special: St.Gallen School of Design

| | |
|---------|------------|
| 37 – 39 | Die Bank |
| 40 – 43 | Tetris |
| 44 – 45 | Hocuspocus |
| 46 – 49 | Cheers |
| 50 – 51 | Birdy |
| 52 – 53 | Seater |
| 54 – 61 | Material |
| 62 – 64 | Processing |

GUHL

In accordance with the spirit of the designer, the Guhl chair, which is regarded as an icon of Swiss style and after 70 years enjoys genuine cult status, is today still made by hand.

Elegance
In both
and function

**The Guhl table & chair.
Unpretentious. Inspired.**

If there is one item of furniture that possesses timelessness, then it is undoubtedly the chair from Willy Guhl. Whether in public areas, gardens or living rooms, it always represents a statement and an invitation to relax, reflect and contemplate. Moreover, for the viewer it constitutes an aesthetic gift and a very rarely achieved symbiosis of form and function.



nce.
h form
unction.

Guhl



Guhl chair / Design: Willy Guhl

Willy Guhl

BIOGRAPHY

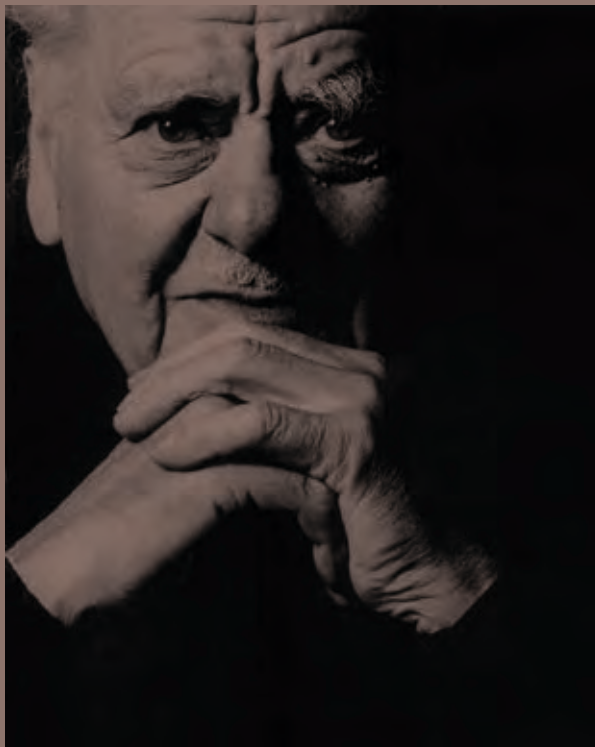
Born 1915 in Stein am Rhein, Switzerland
1930 – 1933 Apprenticeship as a cabinetmaker
in Schaffhausen, Switzerland
1934 – 1939 Interior design studies at the
Zurich School of Arts and Crafts (KGSZ)
1939 Own workshop
1941 Appointment as an interior design teacher at the KGSZ
1951 Invitation to take up an appointment at the State Academy
of Fine Arts in Stuttgart, Germany – Guhl turns down the offer
1951 - 1981 Head of the interior design course at the KGSZ
Died 2004

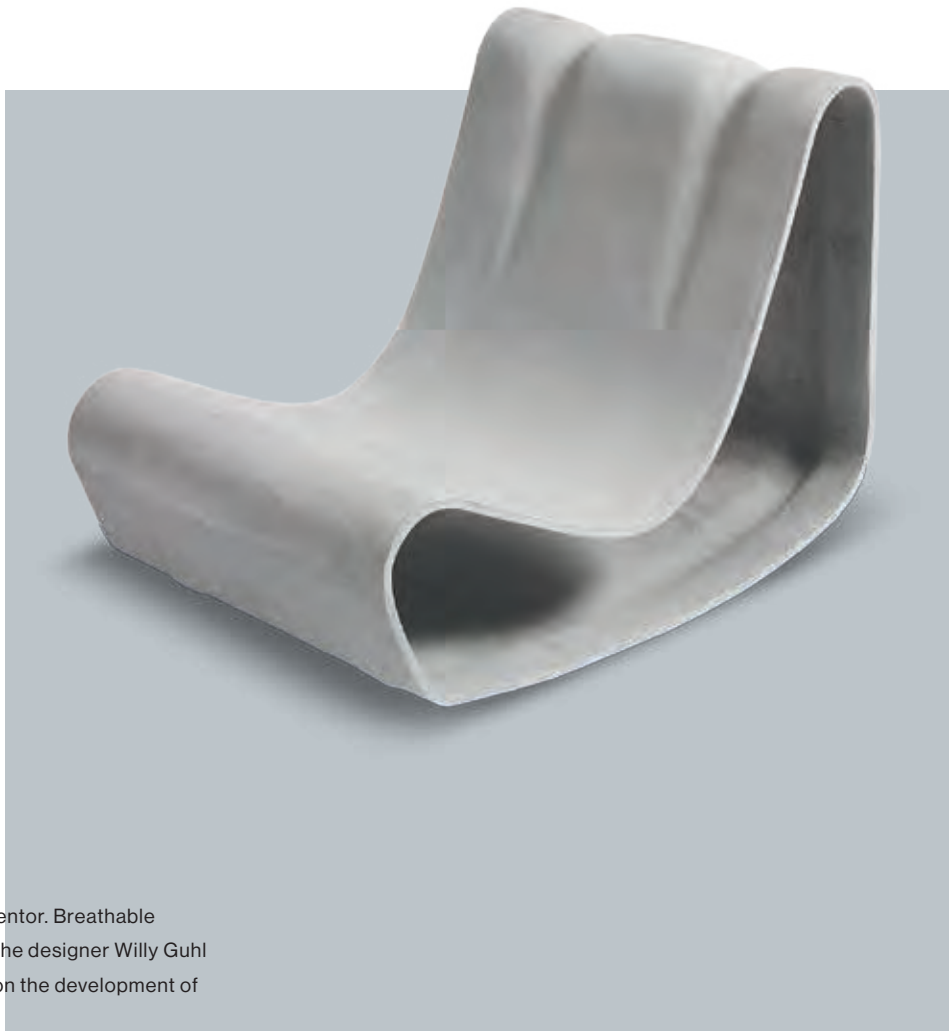
PROJECTS

Various projects as a teacher at the
Zurich School of Arts and Crafts (KGSZ)
G59 garden exhibition project with the KGSZ
Various objects with Swisspearl
Various objects in collaboration with the Dietiker table factory
From 1968, projects with the
Aebi agricultural machinery company
Various competitions and exhibitions
Co-founder of the VSI and SID
(Swiss Association of Industrial Designers)

HONORS

Receipt of the 1966 "Die gute Form" prize for the Rondo and
Excenter plant containers.





Fiber cement from the inventor. Breathable and moisture regulating. The designer Willy Guhl himself worked manually on the development of his outdoor seat.

Dimensions per element

| Length | Width | Height | Weight |
|--------|-------|--------|--------|
| 79 cm | 54 cm | 61 cm | 23 kg |



Guhl



Exclusive. A single fiber cement sheet is turned into a designer table in just one working procedure. The curvilinear form of the Guhl table matches that of the Guhl chair. Space-saving. Ergonomic. Weightless.

Dimensions per element

| Length | Width | Height | Weight |
|--------|-------|--------|--------|
| 72 cm | 40 cm | 22 cm | 12 kg |



Guhli

TRASH CUBE

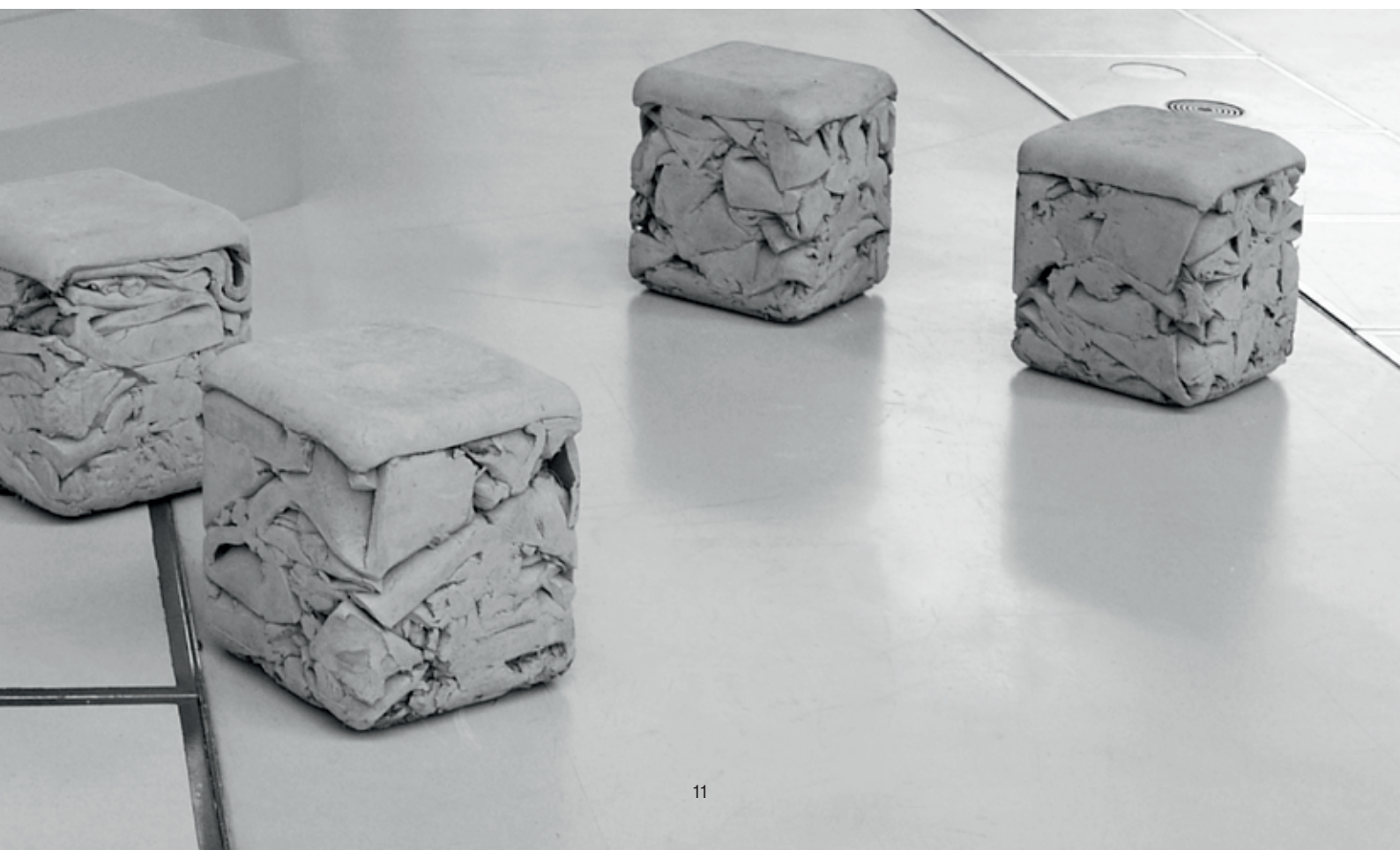
Modern recycling.

The Trash Cube emerged from the ingenious idea of a young designer to create a functional object, while lending scraps of fiber cement a surprising form.

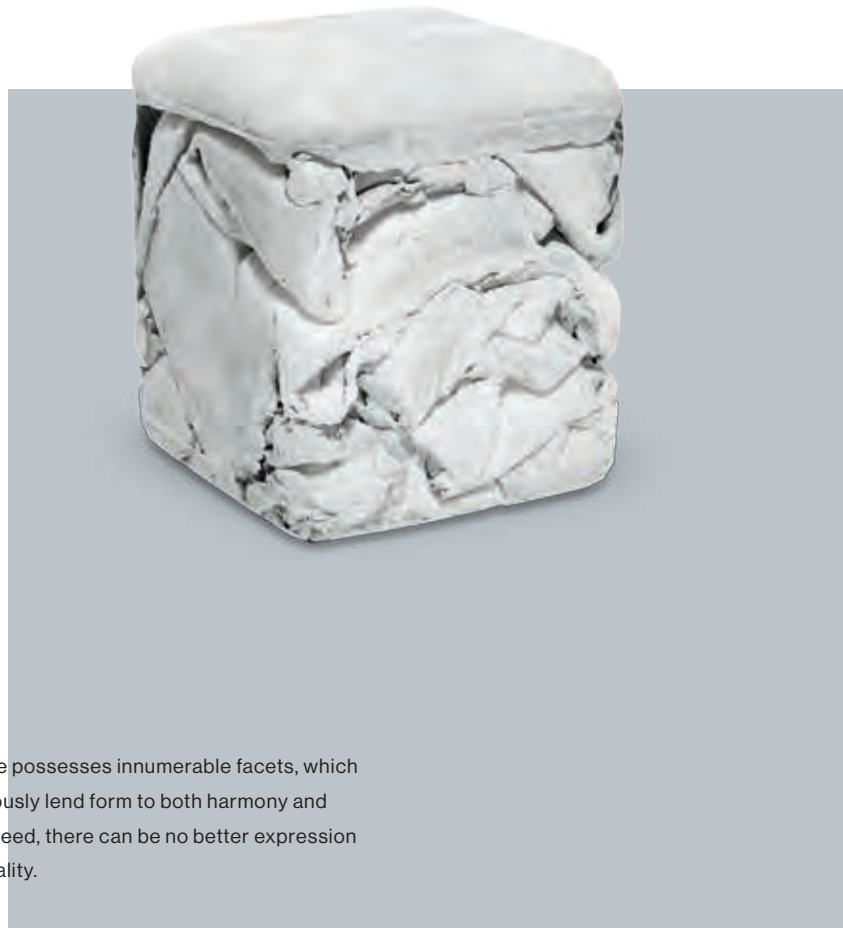


Trash Cube. Stool. Table. Sculpture.

Modularity as a principle. Valuable snippets of fiber cement are given a new purpose. Spontaneous and unique cubes emanate from production waste and demonstrate textures and patterns that awaken our imagination and offer numerous possibilities for employment. Here, flower vases, coffee cups and the owners do battle for space.



Statement. The inspiration of chance.



Trash Cube possesses innumerable facets, which simultaneously lend form to both harmony and variety. Indeed, there can be no better expression of individuality.

Dimensions per element

| Length | Width | Height | Weight |
|--------|-------|--------|--------|
| 31 cm | 31 cm | 36 cm | 48 kg |

Nicolas Le Moigne

BIOGRAPHY

Industrial designer, Ecole cantonale d'art de Lausanne (ECAL), 2001-2007

PROJECTS

Trash Cube (stool) for Swisspearl, 2011
Le Locle (table), Le Day (commode) and Meyrin (shelf) for Atelier Pfister, 2010
Slip stool for Gallery Libby Sellers, 2008
Ecal stool and table for Swisspearl, 2007
Verso Diverso, watering can for Viceversa, 2005
Public clock for the City of Geneva, 2004
Pot-au-Mur flowerpot for Serralunga, 2003

HONORS

Bourses Fondation Leenaards: winner, 2009
2008 Swiss Promotional Award for Design: winner
2008 Swiss Design Prize: nomination
2005 MACEF Design Award: winner





Trash Cube



The juxtaposition or arrangement in formation of numerous unique pieces creates a tableau that inspires the imagination, intuition and inventiveness.

In his work, the designer Nicolas Le Moigne unites sustainability with modernity. Everything down to the smallest morsel is lent purpose and employed. Cement, powdered limestone, fibers, air and water are all that fiber cement requires.



Trash Cube / Design: Nicolas Le Moigne





Trash Cube



ECAL

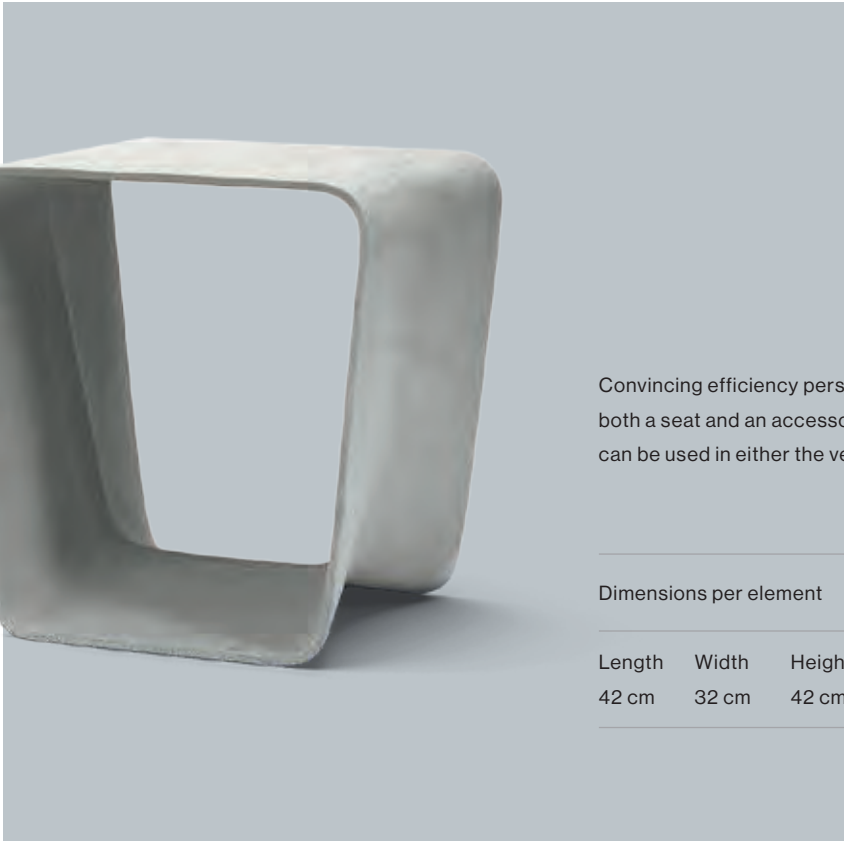
Elegant, modern,
durable. These are the
characteristics of the
table and chair set, which
with its functional design
vision establishes new
benchmarks in both the
in- and outdoor areas.

**Ecal table & stool.
Simplicity and singularity.**

Clarity and presence do not represent a contradiction in terms. Indeed, Ecal Design from Nicolas Le Moigne and the students of the Ecole cantonale d'art de Lausanne (ECAL) exudes a minimalistic elegance, which demonstrates that fiber cement and furniture go hand in glove. Moreover, the quality and resilience of this natural material are particularly evident in the outdoor area.



Ecal



Convincing efficiency personified. The Ecal stool is both a seat and an accessory, and according to taste can be used in either the vertical or the horizontal.

Dimensions per element

| Length | Width | Height | Weight |
|--------|-------|--------|--------|
| 42 cm | 32 cm | 42 cm | 8 kg |

Un
bu
no

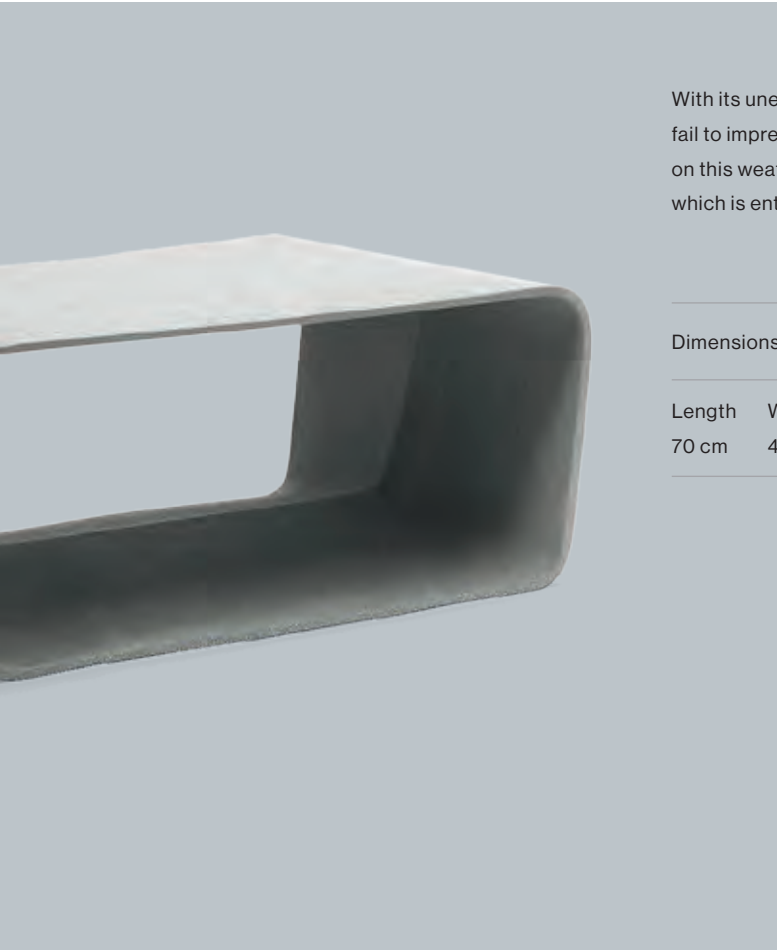


Ecal

Ecal stool / Design: ECAL

compromising,
t charming
netheless.





With its unembellished lines, the Ecal table cannot fail to impress. Books, food and drinks can all stand on this weather-resistant, stable item of furniture, which is entirely recyclable.

Dimensions per element

| Length | Width | Height | Weight |
|--------|-------|--------|--------|
| 70 cm | 49 cm | 27 cm | 15 kg |



DUNE

An outdoor furniture system based on a simple modular principle. The characteristics and malleability of fiber cement were pivotal factors in its creation.

Dune. Dimensions. Showplace.

A functional orientation with magical appeal. Dune, the furniture system created by Rainer Mutsch, has won many design awards and offers a wealth of applications. With its futuristic appearance and perfect form, this seating embodies unsurpassed interior beauty.



The shape alone speaks volumes. Indeed, Dune communicates best without any additional adornment. It is truly a jewel in itself and when the Dune Lounge is paired with a table, what more could one wish for?



Rainer Mutsch

BIOGRAPHY

Born 1977 in Eisenstadt, Austria
Design studies under Paolo Piva at the
University of Applied Arts Vienna
Furniture design studies at the
Danmarks Designskole, Copenhagen
Product design studies at the Berlin University of the Arts
Furniture-/interior design studies,
Higher Technical School, Mödling, Austria
Since 2007, own design office in Vienna

PROJECTS

Rocking chair (plastic) für Sixinch, Belgium
Outdoor collection für Viteo
Projects for Swarovski
Light installations on the Kärntnerstrasse in Vienna

HONORS

Various prizes and exhibitions in New York,
Tokyo, Paris and Milan, etc.
2009 Red Dot Design Award, winner
2010 Good Design Award
Shortlisted for the 2010 Brit Insurance Design Award



Modu Perfe Custo

The modular system offers a plethora of design possibilities and playfully kindles a new and multifaceted individuality.

Dimensions per element

| Length | Width | Height |
|--------|-------|--------|
| 96 cm | 95 cm | 60 cm |



Dune

ular.
ect.
omized.

Dune

In a venue lacking a defined structure or identity, Dune creates a striking social area for the public sphere. Manufactured in a single piece, it is perfect modulated to meet ergonomic requirements and generates space. Space for more design that excites, amazes and enchants.



Dune / Design: Rainer Mutsch

Awards: Red Dot Design 2009 / Good Design 2010 / Brit Insurance Design 2011 / Good Green Design 2011

Exhibitions: Tokyo Design Week / J London Design Museum / UK Beijing Design Biennale / CN Cheongiu Biennale / ROK